

**PROPOSED INTERNAL LAYOUT PLAN OF
SALT LAKE BRANCH, IN BIDYUT BHAWAN
AT KARUNAMOYEE , FOR UCO BANK**

Half ht. partition :

upto 1250 ht.

Table size :

CM - 1850 x 950 mm

Running table -1200 x 650 mm

Cabinet size :

low ht. cab. — (l.h.c)-

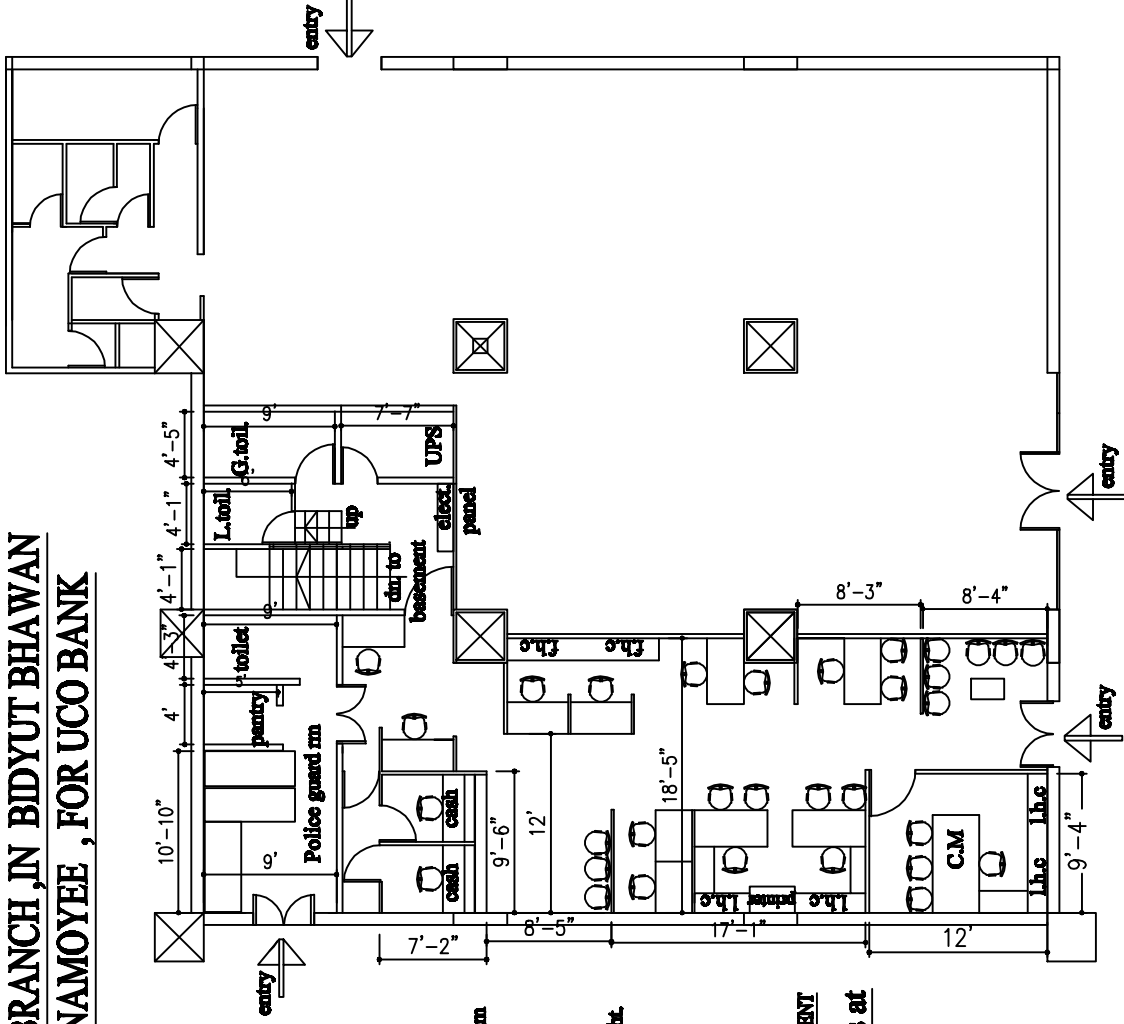
400 wide x 750 ht. / 1050 ht.

full ht. cab. — (f.h.c)-

400 wide x 2400 ht.

CURRENCY CHEST AT BASEMENT

**For Branch -Store is at
basement**



GROUND FLOOR PLAN

SCHEME - 2 approved. dt. 17.10.2022

low ht. cab. — (l.h.c)
full ht. cab. — (f.h.c)
cabinet above — (c. a)